




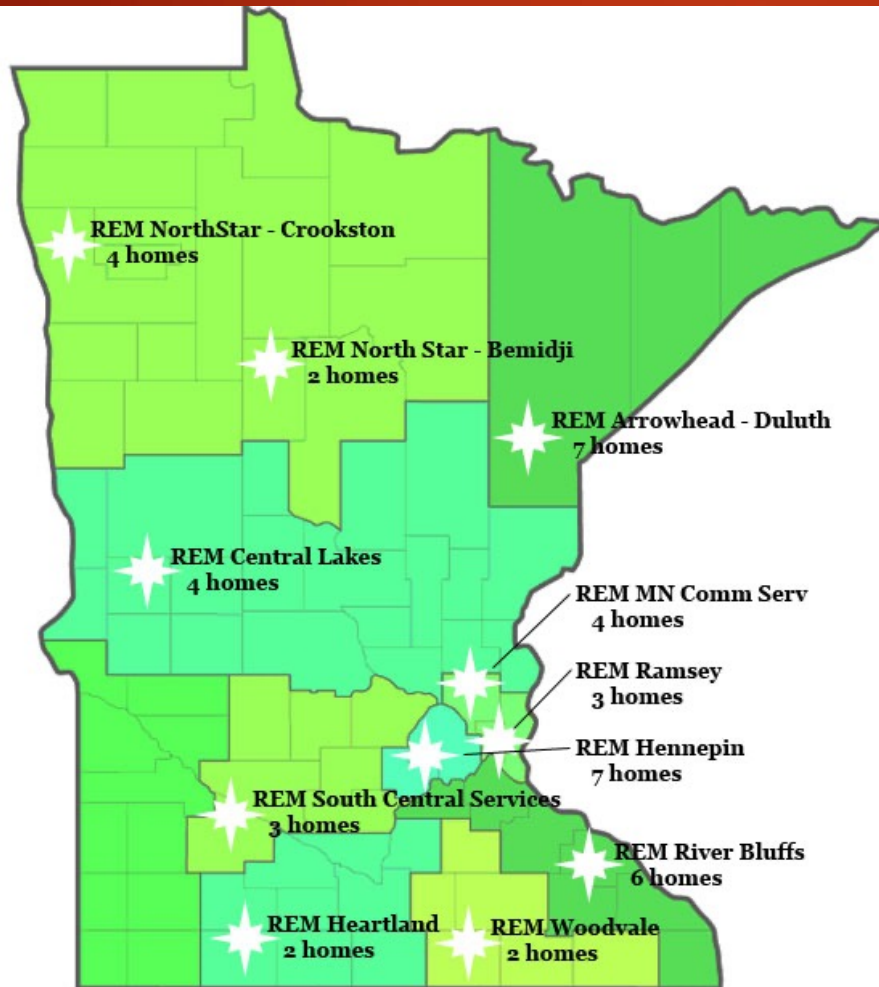
What Could Agency Foster Care for Brain Injury Look Like?

www.ndbin.org • 1 (855) 866-1884 • info@ndbin.org



NORTH DAKOTA
BRAIN INJURY
NETWORK

- 
- ▶ There is very little in the way of group home living for brain injury
 - ▶ ND has two 10-bed Adult Residential—Both of these are almost always full
 - ▶ There is a significant need for small home like living environments able to meet the unique needs of brain injury



REM Minnesota Dedicated Brain Injury Programs

Division Street

Green Bay, WI

REM
WISCONSIN

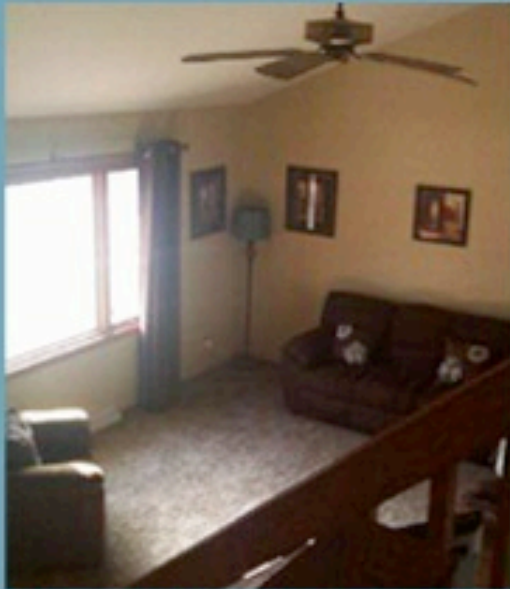


- ◆ *Beautiful, well established, peaceful neighborhood*
- ◆ *Van available for community outings and medical appointments*
- ◆ *Convenient access to a variety of local resources*
- ◆ *Four Season porch*

This beautiful ranch style home is nestled into a quiet, well established neighborhood on the west side of Green Bay. The house is a State Licensed Adult Family home offering four large private bedrooms and two bathrooms. A four season porch is used as a year round activity room and the private fenced in backyard has a swing to relax on while enjoying the outdoors. The program has a van available to transport residents to all regular appointments and other activities of daily living. Two gentlemen and one woman currently reside in the house, and they are seeking a housemate to share their home with. The house is double staffed from 6am to 10pm and single staffed during the overnight hours. There is also periodic triple staffing to allow for group or individualized community activities. A Registered Nurse is responsible for medical consultation and oversight. Staff in the home are trained to meet the individualized needs of each resident.

Jefferson Street AFH

West Bend



- *Newly opened Adult Family Home to support individuals with behavioral challenges
- *Four private bedrooms available, one on the lower level and three on the main floor, with two living rooms
- *Home is located in a quiet West Bend neighborhood
- *Licensed to support individuals with developmental disabilities, mental health issues, or brain injuries
- *Staffing patterns will be developed to meet the individualized needs of those referred for the program
- *Staff thoroughly trained to provide both medical and behavioral support to all residents.

Iowa-Community Neurorehab

- ▶ Based on idea that individuals with a brain injury can best generalize their gains into a community setting when they receive services in the community, thus promoting the reacquisition of daily living skills and the use of strategies that will maximize access to community living options.



▶ Colorado Assistive Living for BI

▶ <https://www.awildflowerassistedliving.com/services4d1cb51a>





NORTH DAKOTA
BRAIN INJURY
NETWORK

Contact us today!

855.866.1884

www.ndbin.org

Funded by:

NORTH
Dakota | Human Services
Be Legendary.™